

# AABA NEWSLETTER

Alaska Attachment & Bonding  
Associates

May/June 2015

*Happy  
Mothers  
Day*

*Happy  
Father's  
Day*

## Inside this issue:

Thank you for your donations	2
FaceBook	2
Resources & Links	3
Fred Meyers, Pick Click Give, Amazon Smiles	4
Activity's	5
Workshop & Classes	6
A word from our CEO	7
AABA info	8

## AABA Workshops

You can now Pre-register and pre-pay for all the 2015 workshops online at [www.akattachment.org](http://www.akattachment.org)

### Mini Workshops

1. FASD and Attachment Disorder-May 18, 2015
2. Attachment Styles-June 15, 2015
3. Trauma and the Brain-August 17, 2015
4. Activating your Mind-November 16, 2015
5. Play for Children with Attachment disorder-December 14, 2015

Instructor: Kelly Eggleston, MS, LPC

Time: 9am to 1pm

Cost: \$50

Held at: LINKS- 3161 E. Palmer-Wasilla Hwy #@, Wasilla, AK 99654

Class is limited to 20 people

### One Day Workshop

Managing Behaviors/Advocating for your Children

Instructor: Kimber Olson, LCSW, BCD, A-CYFSW

Time: 8:30am to 5:30pm

Cost: \$150

Held at: Mat-Su Borough Public Safety Building Facilities (waiting on confirmation)

Class is limited to 55 people

### Two Day Workshop

Instructor: Richard Delaney PhD

Expert in the field of Attachment and child development.

Times: 9:00am to 5:00pm

Cost: \$250

Held at: Mat-Su Borough Public Safety Building Facilities (waiting on confirmation)

Workshops answer the many problems caregivers are having in parenting their: adoptive, foster, kinship, step, and guardianship children.



Alaska Attachment & Bonding Associates depends solely upon yearly support from the community. We are proud to recognize the following individuals, businesses, and organizations for their support through Grants and Donations and Sponsorships



Lend a helping hand

**Alaska Attachment & Bonding Associates**

Please like us on  
FaceBook



**AABA is eligible to receive charitable contributions for 2015 Pick Click Give Program. Designated by PFD applicants electronic Permanent fund Dividend applications.**

**Donations can be made to AABA online.**

Go to: [www.akattachment.org](http://www.akattachment.org)

Thank you!!!

EIN: 31-1626679

2015

**Diamond Circle: (\$10,000 to \$24,000)**

**Rudy Circle: (\$2,5000 to \$5,999)**

**Emerald Circle: (1,000 to \$2,499)**

MSHFdiscretionary grant-Teri Namtvedt

**Platinum Circle: (\$500 to \$999)**

American Seafood

**Gold Circle: (\$150 to \$499)**

Anonymous

Karen & Richard Howes

Fred Meyers

Kelly Eggleston

United Way designation payments

**Silver Circle: (\$50 to \$149)**

Gorilla Fireworks

No recognition wanted

United Way-Designation payment

**Bronze Circle: ( \$25 to \$49)**

In honor of Jacky Coombs

**Aluminum Circle: ( \$1 to \$24)**

**In-kind Circle:**

L & B Printing-Business cards

Laura Wagner-Trash bags-rolls of Stamps-postage to mail sponsorship letters and grants-toilet paper, tissues-paper bowls, plates, napkins.

Carol Rice-postage to mail bingo report

**Sponsors**

**Panda Bear-\$100 to \$300**

**Brown Bear-\$400 to \$600**

Diversified Tire LLC

**Black Bear-\$700 to \$900**

**Grizzly Bear-\$1000 to \$2000**

**Polar Bear-\$3000 to \$5000**

**Volunteers**

Brittany Blawn

Kelissa Arkers

**Special Thanks to:**

To all the Board Members and volunteers.

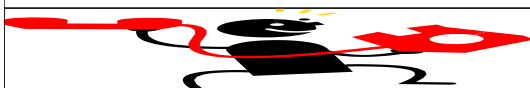
Bingo Mania for using our Gaming permit



## Workshops

Workshops provide the caregivers and professionals who care for children with Trauma & Stressor Related Disorders, such as Attachment Disorder, with information that will benefit the children and aid the caregiver in helping their children succeed.

Workshops are a fun way to learn!



## Resources and Links

**TATTAC:** Bernadine Janzen, MS, LPC; [Tattacbsj@gmail.com](mailto:Tattacbsj@gmail.com)

**Attachment & Trauma Network for parents:** [www.radzebra.org](http://www.radzebra.org),

**Alaska Center for Resource Families:** [www.acrf.org](http://www.acrf.org)

**Alaska Children's Trust:** [www.alaskachildrenstrust.org](http://www.alaskachildrenstrust.org)

**Families & Professionals Resources for the first three years of life:**  
[www.zerotothree.org](http://www.zerotothree.org)

**American Family Advocacy Center:** [www.profane-justice.org](http://www.profane-justice.org)

**Grandfamilies Network Project:** [www.voaaak.org](http://www.voaaak.org), 1-888-522-9866

**PARENT SUPPORT GROUP:** Mom2Mom/Dad2Dad907-376-0366

**Court Appointed Special Advocates:** [www.alaskacasa.org](http://www.alaskacasa.org)

**Attachment Disorder support group:** [www.adsg.org](http://www.adsg.org)

**[Http://thursdaygroup.blogspot.com](http://thursdaygroup.blogspot.com)**

**Co-occurring Disorders Institute: (CoDI)** [www.codi-ak.org](http://www.codi-ak.org)

**CCS Early Learning:** [www.ccsalaska.org](http://www.ccsalaska.org)

**RAD Kid organization:** [www.radkid.org](http://www.radkid.org)

**Bricks 4 Kidz:** [www.bricks4kidz.com](http://www.bricks4kidz.com)

**Nancy Thomas:** [www.attachment.org](http://www.attachment.org)

### AABA Board

President– Eleanor F. Oakley

Vice President– Richard Howes III

Secretary/Treasurer– Carol Rice

Director– Kaye Zwiacher

Director– Jim Wardman

Director-Karen Howes

Director-Naomi Tigner

### CEO

Kelly Eggleston, MS, LPC

### Administrative Assistant

Laura Wagner

MEA Charitable Foundation has granted AABA the funds to purchase equipment to produce parenting tools for parents and professionals to use that take care of children who have Trauma and Stressor Related Disorders, such as Attachment Disorder

This money is made possible from the MEA round up program. Thank you!!!!



*Are you an Amazon Shopper? Alaska Attachment & Bonding Associates is now a part of Amazon Smile*



You shop. Amazon gives.

- Amazon donates 0.5% of the price of your eligible AmazonSmile purchases to the charitable organization of your choice.
- AmazonSmile is the same Amazon you know. Same products, same prices, same Amazon Prime benefits.
- Support your charitable organization by starting your shopping at [smile.amazon.com](http://smile.amazon.com).

*Be sure to choose Alaska Attachment & Bonding Associates as your charity when shopping Amazon Smile!*



**YOU CAN HELP (NON-PROFIT) EARN DONATIONS**

**JUST BY SHOPPING WITH YOUR FRED MEYER REWARDS CARD!**

Fred Meyer is donating \$2.5 million per year to non-profits in Alaska, Idaho, Oregon and Washington, based on where their customers tell them to give. Here's how the program works:

Sign up for the Community Rewards program by linking your Fred Meyer Rewards Card to (non-profit) at [www.fredmeyer.com/communityrewards](http://www.fredmeyer.com/communityrewards). You can search for us by our name or by our non-profit number (#93433).

Then, every time you shop and use your Rewards Card, you are helping (non-profit) earn a donation!

You still earn your Rewards Points, Fuel Points, and Rebates, just as you do today.

If you do not have a Rewards Card, they are available at the Customer Service desk of any Fred Meyer store.

For more information, please visit [www.fredmeyer.com/communityrewards](http://www.fredmeyer.com/communityrewards)

# Spring



## Activity for Attachment Kids

### **“Bricks 4 Kidz” We Learn, We build, We Play with... LEGO® Bricks**

Bricks 4 Kidz is a hands-on class where children learn the fundamentals of S.T.E.M using Lego® Bricks.

Visit our website for more information and a detail description of class themes.  
[www.bricks4kidz.com/alaska-anchorage-Wasilla](http://www.bricks4kidz.com/alaska-anchorage-Wasilla)

- Every Sunday from 1:00-6:00 pm is Sunday Family Day.

Bring your child in for some quality time and have some fun while playing in our Center. (Please call to insure we are open as we do close for special events)

Bricks 4 Kidz Creativity Center 705 S Knik Goose Bay Rd Suite L, Wasilla AK 99654

Please call Bricks 4 Kidz at 376-5400 with any questions or you may have. Thank You!

## Activity for Adults

### **~Play bingo~**

**Bingo Mania helps non-profits in the Valley. (Alaska Attachment & Bonding Associates and Wasilla Senior Center). Without help from businesses like Bingo Mania, non-profits would have a harder time getting funds to support the many programs that non-profits provide to the community.**

**Come play bingo and meet other people in your community while having fun.**

Bingo Mania is located at **6445 E. Blue Lupine Dr. Wasilla AK.**

On the frontage road by Alaska Sales & Service. **Phone 907-376-4816.**

Closed: Monday; Tuesday; Wednesday.

Opened: **Thursday:** One session, starts @ 6:30 pm

**Friday:** Two sessions, starts @ 6:30 pm & 10:30pm-Starting March 7th, late session will have a guaranteed \$1000 for the Double Diamond.

**Saturday:** Two sessions, starts @ 6:30 pm & 10:30 pm

**Sunday:** One session, starts @ 6:30 pm

## Workshops and Classes

Alaska Attachment & Bonding Associates

### FASD and Attachment Disorder Workshop

Instructor: Kelly Eggleston, MS, LPC

You will learn about:

- Common Characteristics
- Things that work if a child is experiencing both
- Does one make the other worse

Date: May 18, 2015 Time: 9am to 1pm Cost: \$50

Held at: LINKS– 3161 E. Palmer-Wasilla Hwy #2, Wasilla, AK 99654

To register: Call Laura at **907-376-0366**-laura@akattachment.org, **Online: [www.akattachment.org](http://www.akattachment.org)**

Class is limited to 20 people

Answers to the many problems caregivers are having in parenting their: adoptive, foster, kinship, step, and guardianship children.

**Registration and payment in full is required:** Online registration [www.akattachment.org](http://www.akattachment.org), or download form and mail to: AABA, PO Box 872188, Wasilla, AK 99687. Or call 907-376-0366 and register over the phone. PayPal is available online at [www.akattachment.org](http://www.akattachment.org). There is a \$25 non-refundable deposit. For more information email: [laura@akattachment.org](mailto:laura@akattachment.org). Phone: 907-376-0366. Fax: 907-376-0966. Web-site: [www.akattachment.org](http://www.akattachment.org).

### **Alaska Center for Resource Families-Mat-Su Area**

#### **Mat-Su Area winter-spring 2015**

Core Training for Resource Families: June 18 6:00-9:00& June 20 9:00-5:00 (11 hrs)

**Adopting Through OCS:** June 25 6:00-9:00 (held at OCS)

#### **ACRF Onsite classes:**

Trauma 101: May 5 10:00-12:00

ACES and Resiliency: June 5 9:00-3:00 (location TBD)

Unless otherwise noted classes are held at ACRF on PW Hwy in Brentwood Plaza Ste A2. Drive behind the PO. ACRF is located in the back of the building.

#### **Rural Teleconferences**

May 13th Wed 12-1 Transitional Aged Youth & Permanency Olivia Shears

May 19th Tues 7-8 Introduction to Special Education Law John Bennett

June 9th Tues 7-8 Characteristics of a Successful Adoptive Family Ruth Post

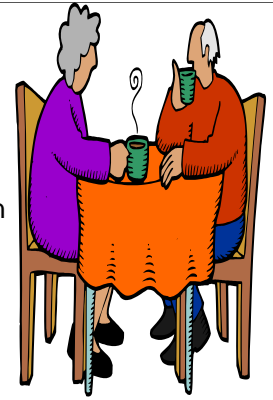
June 10th Wed-12-1 OCS forum: Topic TBA OCS Licensing Staff

The monthly Rural Teleconference is designed for anyone living outside of Anchorage or Fairbanks, although anyone can participate. Families may participate by dialing 1-866-554-6142 and when asked enter the code: 2169378807#. If you phone in before the group leader you will hear music, please stay on the line. For more information contact [bwoodin@nwresource.org](mailto:bwoodin@nwresource.org) or call our toll-free number 1-800-478-7307



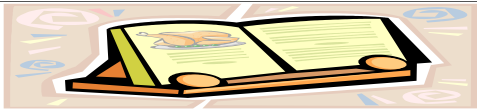
**RAVEN'S: Mom2Mom/Dad2Dad** parent support group

A fun support group for moms and dads parenting behaviorally challenged children.



Mom2Mom/Dad2Dad parent support group meets the first Monday of every month. From 10:30 am until noon at the AABA office, 619 S. Knik Goose-Bay Road, Ste J, Wasilla. No registration is required, just come and talk with the other parents who have the same concerns as you do. Coffee and tea will be served.

If you have any questions, please e-mail [laura@akattachment.org](mailto:laura@akattachment.org) or 907-376-0366.



**“Recipes Needed”**

AABA is creating a recipe book as a fundraiser project. Please join in the fun and send in your favorite recipes: your name, and your agency’s name will appear on your recipe. Send to: [laura@akattachment.org](mailto:laura@akattachment.org).

**A WORD FROM Our CEO**

AABA has been really busy this quarter in getting our name out there. We participated in two health fairs and have updated our websites with our trainings. I encourage everyone who has any interest to take advantage of these opportunities. There was a great response from the child and baby fair. In addition I attended the Children’s Mental Health Conference in Anchorage and shared some of our information with people at that conference. I really enjoy meeting and talking to people.



Your support is always appreciated

Thank you

Kelly Eggleston, MS, LPC, CEO

**RAVEN LENDING LIBRARY:**

Located at: 619 S. Knik Goose-Bay Road, Ste J, Wasilla AK 99654.

Opened: 9:00 am to 4:00 pm. Monday thru Friday.

Books are listed on the AABA web-site: [www.akattachment.org](http://www.akattachment.org)

Please come in and browse our books and DVD’s on Attachment Disorder and other related disorders. Check some books or DVDs out for reading and/or viewing at home. you cannot get to the RAVEN lending library, call and request the books you would like to read, and we will mail them to you.



RAVEN lending library is made possible in part by:

- The Alaska Mental Health Trust Authority
- Mat-Su Health Foundation



Alaska Attachment & Bonding Associates

Phone:: 907-376-0366  
Fax: 907-376-0966

City Center Business Park  
619 S. Knik Goose-Bay Road Ste J



Helping families stay together

Web Site:  
www.akattachment.org

About Alaska Attachment & Bonding Associates

**AABA** is a non-profit organization that provides education, training, support and advocacy for kinship, adoptive and foster families who care for children with Trauma & Stressor Related Disorders, such as Attachment Disorder and professionals who work with this population of children.

- AABA's area of Focus:**
- PREVENTION** of abuse/neglect
  - PLACEMENT** information
  - EDUCATION** in Attachment
  - COMMUNITY** resource information

**WHAT drives AABA?**

**AABA** is passionate about traumatized children.

**AABA** has first hand experience with Attachment Disorder children and knows the Special care and treatment needed to help these children learn, love and trust.

Left untreated, children with Attachment Disorder and other emotional disorders are often times shipped to out-of-state Residential Treatment Centers (RTC's), are likely to become emotionally disturbed adults, unemployable, and are likely to be involved in drugs, alcohol or other illegal activities.

**WHY should you care?**

Because this is a preventable and/or treatable disorder and will take the community working together!

**"BECAUSE THIS IS YOUR HOME" !**

Bingo Mania



**Bingo Mania** helps non-profit programs in the valley. And the non-profits would like to thank Bingo Mania for all the needed help. Bingo Mania is a safe and fun place for adults to get out and meet other adults. Bingo Mania has a Deli for all those hungry Bingo people to satisfy their hunger pangs. Bingo Mania is located at **6445 E. Blue Lupine Dr. Wasilla AK**. On the frontage road by Alaska Sales & Service. **Phone 907-376-4816**.

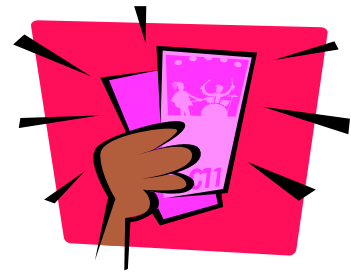
Closed: Monday; Tuesday; Wednesday.

Opened: Thursday: One session, starts @ 6:30 pm

Friday: Two sessions, starts @ 6:30 pm & 10:30pm

Saturday: Two sessions, starts @ 6:30 pm & 10:30 pm

Sunday: One session, starts @ 6:30 pm



**Pull Tabs Mania**

Mile 49 Parks Hwy

Meadow Lakes

Hours: 12:00 am to 8:00 pm

Opened: Seven Days a Week

Located near the Cadillac Café

Also provides Bingo for your enjoyment.