



AABA NEWSLETTER

Alaska Attachment & Bonding Associates

February/March
2010

The Whole Life Adoption

A Relationship of Promise

There are two kinds of relationships in life. One type of connection is genetic -such as the one we share with our birth parents, brothers, sisters, aunts, uncles, and our own birth children. No matter what happens, that tie always exists. Nothing can erase the permanency of the biological relationship.

The other is a union that begins with a promise. Marriage is such a union . Adoption is another. The adoption tie, established by the promise to act as a permanent family to a child born to another, mirrors that of a biological family in many ways. However, within that promise are dynamics that set it apart.

Excited adoptive parents often enter the relationship of promise with little perception of or adequate preparation for the unique challenges resident within adoption. Some of these issues follow all members of the adoption union, the parents and the child, throughout life. When issues that normally occur within the framework of adoption arise unexpectedly, parents can experience a wide range of unsettling reactions: guilt, a sense of failure, inadequacy, fear, or helplessness.

There are critical times in the life of most adoptive families when any one of a number of adoption-related matters may surface. Without sensitive handling, these fragile concerns become painful, possible even threatening the foundation of the adoption promise.

- First, to acquaint prospective and new adoptive parents with the issues surrounding the early steps of the journey.
- Second, to validate the concerns of adoptive families in the middle of the child-rearing years who find themselves wondering if what they are experiencing is normal and how best to solve unexpected pressures and problems.
- Third, to offer direction to parents facing the crucial transitional years of adolescence and young adulthood.

It is hoped that this effort will encourage families to take the journey into adoption with excitement and anticipation, bolstered by the knowledge and understanding that will create a happy, nurturing family environment.

Choosing to Love a Stranger

Adoptive parents enter adoption with five major challenges unique to preparing for this experience.

- First, they may have to mourn the loss of their dream-their ability to conceive children, their status as birth parents, and their birth child.
- Second, they are unlikely to have role models for guiding them through the process.

(Continued page 4)



Thank You ! 2
Grants & Donations

Workshop Info 3

Links / Resources 3

Continued from pg 1 4
The Whole Life Adoption

Spotlight RTC's 5
Shadow Mountain
Continued from pg 4
The Whole Life Adoption

Events & Training 6



Note from the 7
CEO/President
Lending Library Info

AABA's Mission 8



• Helping Families Stay Together

Alaska Attachment & Bonding Associates depends solely upon yearly support from the community. We are proud to recognize the following individuals, businesses, and organizations for their support through Grants and Donations.



Lend a helping hand

Complete list of donators can be found at:
www.akattachment.org



Alaska Attachment & Bonding Associates

is eligible under AS 43.23.062 to receive charitable contributions as designated by PFD applicants on the 2010 electronic Permanent Fund Divided applications. Program: (Pick. Click. Give.)

Please help with our mission

PICK. CLICK. GIVE to:

Alaska Attachment & Bonding Associates



2010

Ultimate Diamond Circle: (\$25,000 and above)

Diamond Circle:(\$10,000 to \$24,999)

Sapphire Circle:(\$6,000 to \$9,999)

Ruby Circle: (\$2,500 to \$5,999)

Emerald Circle:(\$1,000 to \$2,499)

Totem Ocean Trailer Express, Inc

Susan Denton/BP matching

Platinum Circle:(\$500 to \$999)

Gold Circle:(\$150 to \$499)

Mat-Su Health Foundation

Diversified Tires

Silver Circle:(\$50 to \$149)

Karen Howes

Bronze Circle:(\$25 to \$49)

Aluminum Circle:(\$1 to \$24)

In-kind Circle:

Volunteers

Eleanor Oakley,

Jim Wardman

Dianne Ferguson,

Wanda Thomas

Karen Howes,

Laura Wagner

Brittany Blawn,

Rosemary Burnett

Special Thanks to

Mr. Howes for donating his time.

Karen Howes for donating an extra 5% of her sales from the Pampered Chef Fundraisers.

And thanks to all the Board Members and volunteers.

And thanks to:

Bingo Mania for using our



**“The New One-day Workshop:
“Attachment Disorder Workshop: ”**

Upcoming Workshop

June 5, 2010

Held at:

Central Mat-Su Fire Department

Training Room 1

101 West Swanson Avenue

Wasilla, Alaska

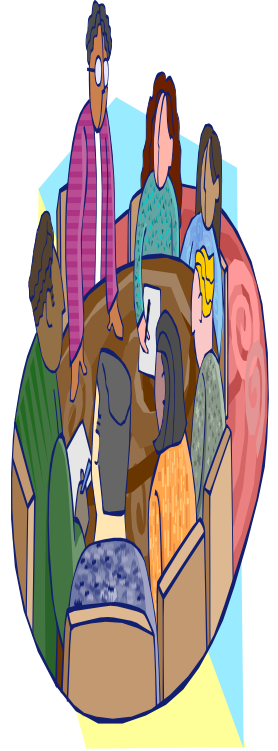
9:00 am to 5:00 pm

Continental Breakfast and Sign-in 8:30 am

Pre-Registration Required !!!!!

907-376-0366

www.akattachment.org



Workshops
Are a fun way to
learn!



Resources and Links

TATTAC Bernadine Janzen, MS, LPC;
bsj@laguna.com.mx

Attachment Disorder Network for parents;
www.radzebra.org

Alaska Parent Line; 1-800-643-5437

Alaska Center for Resource Families;
www.acrf.org

Alaska Children's Trust;
www.alaskachildrenstrust.org

Families & Professionals resources for the
first three years of life;
www.threetozero.org

American Family Advocacy Center;
www.profane-justice.org

For Grandparents raising grandkids;
grands@voaak.org 1-888-522-9866

RAVEN Respite Parent Support Group, sub-
scribe at; www.subscribe@yahoo.com
(To sign up for Online support group: call 907-
357-6263 or Email: [princessbuter-
cupp@yahoo.com](mailto:princessbuter-cupp@yahoo.com)) you will receive easy in-
structions on how to get on the site.

RAVEN Respite Support Melissa Jessup;
zeusl@mtaonline.net

Court Appointed Special Advocates;
www.alaskacasa.org

Attachment Disorder support group;
www.adsg.org

Child Welfare Information Gateway;
www.childwelfare.gov

RAD Kid Organization; www.radkid.org

Visit the AABA

web-site
for
information on
upcoming
workshops.

www.akattach-ment.org

“RAVEN
Respite Striving to make a
Difference for families in the



(Continued from Page 1) The whole life adoption

- **Third, they must realize that their hope for a family will be dictated by the input of strangers.**
- **Fourth, pre-adoptive parents have no timetable by which to plan their future.**
- **Fifth, parental rights are not fully granted for at least six months into the relationship.**

Parents will face a lifetime of dilemmas that are characteristic only of the adoptive family relationship.

1. **How do we handle the child's genetic heritage and how do we relate this to the child without a negative attitude?**
2. **How do we handle the child's early life experiences, and how do we relate this to the child without a negative attitude?**
3. **How do we handle the child's cultural heritage and how do we relate this to the child without a negative attitude?**
4. **How do we handle the child's religious beliefs and how do we relate this to the child without a negative attitude?**

When the Child Comes Home

Attachment: How to develop the Crucial Bond

One of the most difficult things for adoptive parents to accept is the fact that nothing can change their adopted child's genes, early life experiences, or ties to another family.....Only by allowing a child this heritage from the birth family and incorporation it into the current family, can that child really belong to the adoptive family

Bourguignon

Attachment to a significant person is one of the most important achievements for an infant, because it creates a rich treasury of skills for socialization. Healthy attachments also stimulate intellectual development and identity formation.

Attachment occurs as a child initiates a need and the parents consistently respond. The child eventually learns that he can trust his environment.

Children who never had the opportunity to form an attachment , due to circumstances in their birth home or surrounding their separation from their birth mother, may exhibit some of the following behavioral symptoms:

- **Withdrawal and rejecting behavior**
- **Hoarding or gorging food**
- **Aggressive behavior**
- **Lying and stealing**
- **Poor eye contact**
- **Delayed conscience development**

Indiscriminate affection

Continued pg 5

R.T.C. Spot Light

Shadow Mountain Behavioral Health



Shadow Mountain Behavioral Health System

6262 S. Sheridan Rd.

Tulsa, OK 74133

Phone: 918-492-8200

Fax: 918-492-2849



“Each day, as brighter day”

Continued from pg 4

These behavioral signs may indicate that a child is in desperate need of attaching to a significant person a parent. Studies have shown that as a child attaches, many of these behaviors will diminish or even disappear.

Barriers to Adjustment: Strategies to Ease the Transition

Adoptive parents who bridge the adjustment barriers understand two things.

First, their child has had a tremendous loss—loss of both parents,

Genealogical ties, cultural heritage, to cite a few.

Second, that child may emotionally revisit those losses at crossroads

On their journey through childhood into young adulthood.

Family Ties

Preparing for a child to come into the home requires two steps by adoptive parents:(1) Learn as

may slow the adjustment of the adoptive relationship for all family members. These barriers include:

- **From the child: unfinished business, separation and loss, lack of preparation, and cultural differences.**
- **From the parents: unmet needs and unmatched expectations, marital problems, reordered family system, and incomplete resolution of loss in their own lives.**

H \] g ' U f h] W ` Y '] g ' k f] h h Y b ' Z f c a ' h \ Y ' V c c _ ' Î H \ Y ' K \ c ` Y ' @]
(c)1993

Used by Permission of NavPress, All Rights Reserved. www.navpress.com (1

-800 -366-7788).

This book is in our Lending Library



Alaska Attachment & Bonding Associates: Workshops

! > i b Y :) _ z ' & \$ % \$ I

Held at: Central Mat-Su Fire Department, Training Room I

101 West Swanson Ave. Wasilla, Alaska

REGISTRATION REQUIRED

Register Early Call; Phone: 907-376-0366 Fax: 907-376-0966

online registration @ www.akattachment.org

(will not work with web based email addresses, such as hotmail, g-mail, yahoo)

Stone Soup Group-Trainings -call Stone Soup Group 561-3701 or contact Cheri Scott | cheris@stonesoupgroup.org

Epilepsy: Vagus Nerve Stimulation

Presented by: Jennifer Stitzel of Cyberonics, Inc

WHEN: Tuesday, February 9th 2010: 9:00am - 11:00 am

WHERE: BP Energy Center (900 E. Benson Blvd. Anchorage)

Space is limited! You MUST be registered to attend this workshop. Register online at <http://bit.ly/BPEPVNS>

Special Education Mediation, Collaboration, and Communication Workshop

Presented by: *Bob Deitrick and **Dave Thomas from Alaska Special Education Mediation Services

WHEN: Thursday, February 11th, 2010: 6:00 pm - 8:00 pm

WHERE: Stone Soup Group (307 E. Northern Lights Blvd, Anchorage)

Space is limited! You MUST be registered to attend this workshop. Register online at <http://bit.ly/FEBMED>

ASPIRE Introductory Training on Special Education for Students and Parents in the Anchorage Area

Presented by: Christie Reinhardt from Stone Soup Group

WHEN: Thursday, February 15th, 2010: 10:00 am - Noon

WHERE: Stone Soup Group (307 E. Northern Lights Blvd, Anchorage)

This training is specifically meant for families new to special education, and focuses on Alaska and Anchorage

Space is limited! You MUST be registered to attend this workshop. Register online at <http://bit.ly/ASPIRE215>

Bill Pfunder, TRAINING COORDINATOR, Stone Soup Group, (907) 561-3701, 1-877-786-7327

Participants who do not have internet access may call Bill at (907) 563701 to register.

Upcoming Resource Family Training: December 2009-June 2010

Licensed Foster Homes are required to have 15 hours of training per licensing year for a two parent home and 10 hours for a single parent home. Please register for any of the following events by contacting Betsy at the Alaska Center for Resource Families Mat-Su office at 376-4678.

Core Training:

Relative Core- 3 Thurs classes April 1st-15th from 6:00-9:00 PM. Must attend all 3 for a total of 9 hrs

Adopting through the Office of Children's Services:

Thursday April 22nd from 6:00-9:00 PM

On-Site ACRF Training and Support:

Fri Feb 19th Video Day, 6 films on Parenting, 9:00-3:00. May attend any part of the day.

Tues Mar 2nd, Hard to Hold: Attachment Difficulties, noon-1:00 (also telephonic)

Fri Mar 19th Video Day, 6 films on Attachment, 9:00-3:00. May attend any part of they day.

Thurs Mar 25th 6:00-9:00 PM & Sat Mar 27th 9:00-5:00, Strengthening Families thru Adoption, 11 hours

Classes meet in the ACRF office, 5050 Dunbar Sr., Ste. A2 off the Palmer-Wasilla Hwy, Brentwood Plaza unless otherwise noted. Call Betsy 376-4678 or bwoodin@nwresource.org mandatory pre-registration.

Rural Teleconference Training and Support:

Wed Feb 10th, Reactive Attachment Disorder, 7:00-8:00 PM

Tues Mar 2nd, Hard to Hold: Attachment Difficulties, noon-1:00

Wed Mar 10th, The New OCS Family Contact Standards, (Aileen Mcinnis) 7:00-8:00 PM Tues Apr 6th, ASD, noon-1:00

The monthly Rural Teleconference is intended for anyone living outside of Anchorage, Fairbanks, Juneau, Wasilla or Palmer although we can allow others to participate. Families may participate by dialing 1-888-626-7441 and when asked enter the code: 9939775#. If you phone in before the group leader you will hear music, please stay on the line. For more information contact bwoodin@nwresource.org or call our toll-free number 1-800-478-7307.



î D U a d Y f Y X · 7 \ Y Z · : i b X · F U] g Y f g î

Pampered Chef Consultant Karen Howes

You may order on-line at www.pamperedchef.biz/karenh anytime or request a catalog from Karen, at 357-1045/315-1425 or email request to karenh@gci.net.

CASA

“Make a difference in the life of an abused or neglected foster child. Become a CASA (Court Appointed Special Advocate). To give a child a CASA is to give them a voice. To give them a voice is to give them hope, and to give them hope is to give them the world.” for more information contact: The Mat-Su Valley CASA Program 746-0547 /alaskacasa.org

Lending Library Located at: 619 S. Knik Goose-Bay Road, Suite J, Wasilla, AK 99654

Open: 8:00 a.m. to 4:00 p.m. - Monday though Friday

Please come in and browse, check some books out, to read at home at your leisure, then either bring them back or mail them in. Please call Laura at 907-376-0366 with any questions.



A Word from our CEO/President

H \ U b _ · m c i · Z c f · g i d d c f h] b [· 5 5 6 5 Å "

“Bingo Mania” non-profits” by using their gaming permits.

(Non-profits are Alaska Attachment & Bonding Associates & Big Lake Lions Club)

Open: Monday: Closed

Tuesday: Closed

Wednesday: one session starts @ 6:30 p.m.

Thursday: one session starts @ 6:30 p.m.

Friday: two sessions starting @ 6:30 & 10:30

Saturday: two sessions starting @ 6:30 & 10:30

Sunday: one session starting @ 6:30

6445 E. Blue Lupine Drive Wasilla, Alaska 99654, Phone: 907-376-4816

Located on Parks next to Alaska Sales and Service.

î : f Y Y · 8] b b Y f · U h ·) . \$



b ·

Alaska Attachment & Bonding Associates

City Center Business Park
619 S. Knik Goose-Bay Road, Ste J
Wasilla, AK 99654

Phone: 907-376-0366

Fax: 907-376-0966

E-mail: eleanor@akattachment.org



AABA

Web Site

www.akattachment.org

About Alaska Attachment & Bonding Associates

AABA is a non-profit organization that provides education, training, support and advocacy for kinship, adoptive and foster families who care for children with emotional disorders, such as Reactive Attachment Disorder (RAD), and professionals who work with this population of children.

AABA's area of Focus: **PREVENTION** of abuse/neglect

PLACEMENT information

TRAINING in Attachment

COMMUNITY Resource information

WHAT drives AABA?

AABA is passionate about traumatized children.

AABA has first hand experience with Attachment Disorder children and knows the special care and treatment needed to help these children learn love and trust.

Left untreated, children with Attachment Disorder and other emotional disorders are often times shipped to out-of-state Residential Treatment Centers (RTC's), and are likely to become emotionally disturbed adults, unemployable, likely to be involved in drugs, alcohol or other illegal activities.

Attachment Disorder children place a huge impact in dollars, stress, crime, and livability in the Mat-Su Borough and throughout Alaska.

WHY should you care?

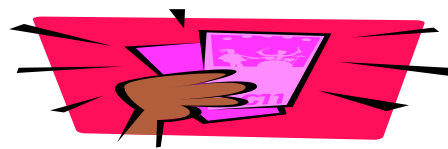
Because this is a preventable disorder and will take the community working together! AND. "**BECAUSE THIS IS YOUR HOME!**"



The Bingo Mania is a light yellow building away from all the hustle and bustle of the bowling alley. A much more pleasant and serene atmosphere. There is a Bingo Mania Deli for all the hungry Bingo people. Bring a friend and help celebrate this new kind of Bingo establishment. Bingo Mania is located at 6445 e. Blue Lupine Dr. Wasilla. 907-376-4816, On the frontage Rd by Alaska Sales & Service.



NEW PULL TAB STORE!!!!



Î D I @ @ ' H 5 6 G ' A 5

Mile 49 Parks Hwy

Meadow Lakes

Opened 11:00am to 9:00pm

(helping the non-profits)